

()

Hyles euphorbiae (Lep., Sphingidae)

†

*

(/ / : / / :)

Hyles euphorbiae L.

Euphorbia

Euphorbia macroclada Boiss.

E. denticulata Lam.

E. heteradena Jaub & Spach. *E. boissiriana* Prokh.

E. seguiriana Neck.

/ /

± /

± /

± ±

± ±

/ /

Tachinidae

Masicera sphingivora *Exorista grandis* (Zetterstedt)

(Robineau-Desvoidy)

Hyles euphorbiae

:

()

(*Euphorbia* spp.)

Hyles euphorbiae L.

()

()

E. esula L.

H. () .
euphorbiae .()
 () .
 ()
 ()
 ()
 ()

Hyles
 Choercampina
 Macroglossinae

()
H. euphorbiae

.()
 Onagraceae *Hyles*
 .() Vitaceae Rubiaceae

H. tithymali *H. euphorbiae*
H. costata (von Nordmann) (Boisduval)
H. Euphorbiaceae
euphorbiae

H. Euphorbiae
)

Euphorbia
H. euphorbiae .()

()
 ()
 ()

()
 " () () .()
H. euphorbiae

() ()

H. euphorbiae

() .

... Hyles euphorbiae (Lep., Sphingidae) :

E. macroclada

)

(

×

(")

"

E. macroclada *Euphorbia denticulata* Lam.

×

E. heteradena Jaub & Spach. Boiss.

E. boissiriana Prokh. *seguiriana* Neck.

)

(

×

(

)

E.

denticulata

E. macroclada

"

E. denticulata

/ /
()
/ /

"

()

"

H. euphorbiae

=) / ± /
(/ = / =
" ()

H. P.

Tschorsnig

/ ± /
=) / ± / / ± /
(

H. euphorbiae

H. euphorbiae

H. euphorbiae

H. euphorbiae

/ /

E. E. denticulata E. macroclada

() /

E. seguiriana E. heteradena boissiriana

"

... Hyles euphorbiae (Lep., Sphingidae)

:



Hyles
() *euphorbiae*



() *Hyles euphorbiae*

H. euphorbiae

E. denticulata *E. macroclada*

()

()

H. euphorbiae

Tachinidae

E. denticulata

E. macroclada

E. seguieriana

E. boissiriana

()

H. euphorbiae

E. cyparissias L. *E. paralias* L.

E. characias

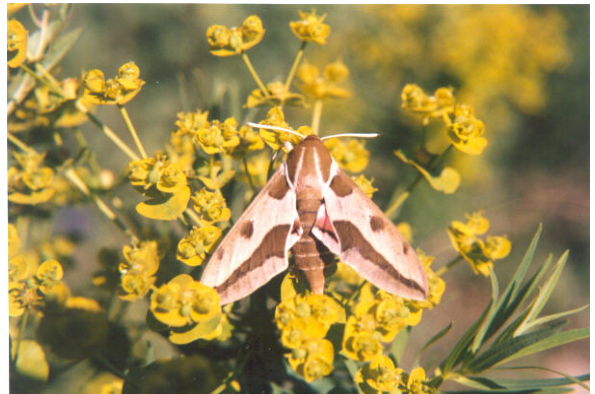
()

E. cyparissias

"

E. esula

E. paralias gerardiana Jacq.



() *Hyles euphorbiae*



Hyles euphorbiae

() *Euphorbia macroclada*

Exorista grandis Zetterstedt (Diptera: Tachinidae)

/ ± /
/ ± /

Saturniidae

Lymantriidae Pieridae Arctidae
()

Masicera sphingivora (Robineau-Desvoidy)
(Diptera: Tachinidae)

/ ± /
/ ± /

H. euphorbiae

H.

euphorbiae

Hyles centralasiae(Staudinger)
()

H. euphorbiae

H. euphorbiae

(*Silen*

(*Epilobium* sp.)

(*Petunia* sp.)

sp.)

... Hyles euphorbiae (Lep., Sphingidae)

:

) ((Salvia sp.) (Echium sp.)
((Zigophyllum sp.) (Nicotiana sp.)
() (Caparis sp.)

Silen sp. Nicotiana sp. Echium sp. Petunia sp.
Epilobium sp.

(E. denticulata)
(E. macroclada)

± () /
± () / ()

.(= = =)

/
" =) "

() = = =)
() . (

H. ()
euphorbiae

() .

()

() ()) / ± ()
() () / ± ()

() ()) /

() ()

()
()

()

H. P. Tschorsnig

H. euphorbiae

REFERENCES

4. Anderson, G.L., E.S. Delfosse, N.R. Spencer, C.V. Prosser, and R.D. Richard. 2000. Biological control of leafy spurge: An emerging success story. pp. 15-25. In: Neal R. Spencer(ed). Proceedings of the 5th International Symposium on Biological Control of Weeds. 4-14 July 1999. Montana State University, Bozeman, Montana, USA.
5. Batra, S.W.T. 1982. Biological control in agroecosystem. *Science*. 215:134-139.
6. Batra, S.W.T. 1983. Establishment of *Hyles euphorbiae* (Lepidoptera: Sphingidae) in the United States for control of two weedy spurges, *Euphorbia esula* L. and *E. cyparissias* L. *Journal of New York Entomological Society*. 91:304-311.
7. Ford, T.H., M.R. Shaw, and D.M. Robertson. 2000. Further host records of some west palearctic Tachinidae (Diptera). *Entomologist's Record and Journal of Variation*. 112:25-36.
8. Forwood, J.R. and M.K. McCarty. 1980. Observation on the life cycle of spurge hawkmoth. *Transactions of the Nebraska Academy of Science*. 8:31-33.
9. Friedrich, E. 1986. *Breeding butterflies and moths: A practical handbook for British and European Species*, Colchester, 176pp.
10. Ganev, J. 1984. Catalogue of the Bulgarian Bombyces and Sphinges. *Entomofauna*. 5:391-467.
11. Hansen, R.W., R.D. Richard, P.E. Parker, and L.E. Wendel. 1997. Distribution of biological control agents of leafy spurge (*Euphorbia esula* L.) in the United States. *Journal of Biological Control*. 10:129-142.
12. Holloway, J. K. 1964. Projects in biological control of weeds. Pp. 600-656. In: DeBach, P. (ed.) *Biological Control of Insect Pests and Weeds*. Chapman and Hall, Ltd. London, 844 pp.
13. Horvath, Z. 1985. Data on the biology of *Celerio euphorbiae* (Lep., Sphingidae) which feeds on cypress spurge (*Euphorbia cyparissias* L.). *Novenyvedlem*. 21:490-495.

14. Kitching, I. J. and J. M. Cadiou, 2000. Hawkmoths of the World: an annotated and illustrated revisionary checklist. Cornell University Press, Ithaca.
15. New, T.R. 1971. The consumption of *Euphorbia cyparissias* (Euphorbiaceae) by larvae of *Celerio euphorbiae* (Lepidoptera : Sphingidae). Canadian Entomologist. 103:59-66.
16. Nupponen, K. and M. Fibiger, 2002. Contribution to the knowledge of the fauna of the Bombycidae, Sphingidae and Noctuidae of the southern Ural Mountains, Phegea. 30:121-185.
17. Pittaway, A. R. 1983. Food plants of hawkmoths. Bulletin of the Amateur Entomologist Society. 42:64-69.
18. Pittaway, A.R. 1995. The hawkmoths of the western palearctic: Their ecology and biogeography. Ph.D. Dissertation. Imperial College of Science, Technology and Medicine, University of London.
19. Pittaway, A. R. and I. J. Kitching, 2000. Notes on Selected species of hawkmoths (Lep., Sphingidae) from China, Mongolia and the Korean Peninsula. Tinea. 16:170-211.
20. Poritz, N.H. 1988. Laboratory and development, field population dynamics, pupil predation and the history of releases of spurge hawkmoth, *Hyles euphorbiae* L., a biological control agent of leafy spurge, *Euphorbia esula* L., in Montana. MS Thesis, Department of Entomology, Montana State University, Bozeman, MT: 92.