

()

*

(/ / : // :)

Fusarium graminearum

()

(Disease

()

Index)

(ME)

(R2)

(CRM)

(EF)

(CD)

(RMSE)

R2= /

/ /

R2= /

()

(Fusarium Head

Fusarium

Blight)

()

F. graminearum

()

(Sporadic)

()

()

Correlation Residual plot

()

()

()

FHB

()

()

()

()

()

grape veine leaf roll associated
closterovirus (GLR_aV-3)

()

(SHA3/SERI//NANJING

833/Lira)

()

/ ×

×

()

(t) (cm

(y)
(t)

Statgraphics

mm

PDA

dy/dt

(r)

+

)

°C

(

(R²)

)

(

(R²)

R²

(RMSE)^ξ

(ME)^τ

(EF)^η

(CD)^φ

(CRM)^ν

:()

(Disease Index)

$$ME = \max |p_i - O_i|_{i=1}^n$$

$$DI = \{[(\times) + (\times) + \dots + (\times)] / [(\times)]\} \times$$

1. Reliability
2. Statistics
3. Maximum Error
4. Root Mean Square Error
5. Coefficient of Determination
6. Modeling Efficiency
7. Coefficient of Residual Mass

DI

)

(

)

R^2
 CRM=0
 CD
 R^2 ME
 CRM
 $R^2 = /$
 a

$$EF = \frac{\sum_{i=1}^n (O_i - \bar{O})^2 - \sum_{i=1}^n (P_i - O_i)^2}{\sum_{i=1}^n (O_i - \bar{O})^2}$$

$$RMSE = \left[\frac{\sum_{i=1}^n (P_i - O_i)^2}{n} \right]^{1/2} \times \frac{100}{\bar{O}}$$

$$CRM = \frac{\sum_{i=1}^n O_i - \sum_{i=1}^n P_i}{\sum_{i=1}^n O_i}$$

$$CD = \frac{\sum_{i=1}^n (O_i - \bar{O})^2}{\sum_{i=1}^n (P_i - \bar{O})^2}$$

P_i
 n ()
 O « »
 CD RMSE ME
 EF CRM . EF
 ME
 RMSE
 ()
 1 CD

RMSE ME
 CD
 CRM
 ()
 $R^2 = /$
 $R^2 = /$
 b

EF
 EF
 CRM
 CRM
 EF=0 CRM=0
 ME=0 RMSE=0 CD=1

R^2
 ME
 CD
 RMSE
 RMSE ME
 CD
 EF

$$R^2 = /$$

d

CRM

R²

-

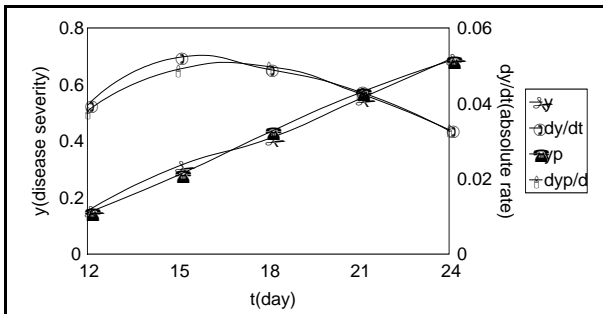
(B)

(A)

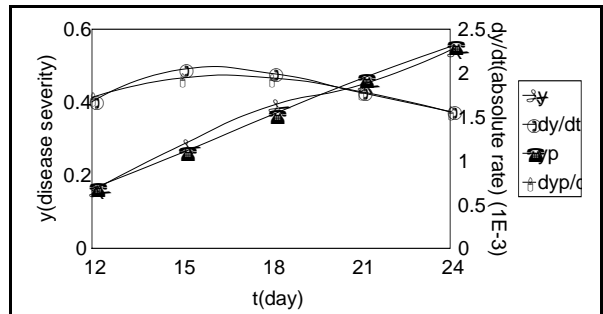
	A						B					
	R ²	ME	RMSE	CD	EF	CRM	R ²	ME	RMSE	CD	EF	CRM
M	/	/	/	/	/	/	/	/	/	/	/	/
L	/	/	/	/	/	/	/	/	/	/	/	/
LL	/	/	/	/	/	/	/	/	/	/	/	/
G	/	/	/	/	/	/	/	/	/	/	/	/
W2	/	/	/	/	/	/	/	/	/	/	/	/
W3	/	/	/	/	/	/	/	/	/	/	/	/
M	/	/	/	/	/	/	/	/	/	/	/	/
L	/	/	/	/	/	/	/	/	/	/	/	/
LL	/	/	/	/	/	/	/	/	/	/	/	/
G	/	/	/	/	/	/	/	/	/	/	/	/
W2	/	/	/	/	/	/	/	/	/	/	/	/
W3	/	/	/	/	/	/	/	/	/	/	/	/
M	/	/	/	/	/	/	/	/	/	/	/	/
L	/	/	/	/	/	/	/	/	/	/	/	/
LL	/	/	/	/	/	/	/	/	/	/	/	/
G	/	/	/	/	/	/	/	/	/	/	/	/
W2	/	/	/	/	/	/	/	/	/	/	/	/
W3	/	/	/	/	/	/	/	/	/	/	/	/
M	/	/	/	/	/	/	/	/	/	/	/	/
L	/	/	/	/	/	/	/	/	/	/	/	/
LL	/	/	/	/	/	/	/	/	/	/	/	/
G	/	/	/	/	/	/	/	/	/	/	/	/
W2	/	/	/	/	/	/	/	/	/	/	/	/
W3	/	/	/	/	/	/	/	/	/	/	/	/

Monomolecular=M • Logistic=L • Log-logistic=LL

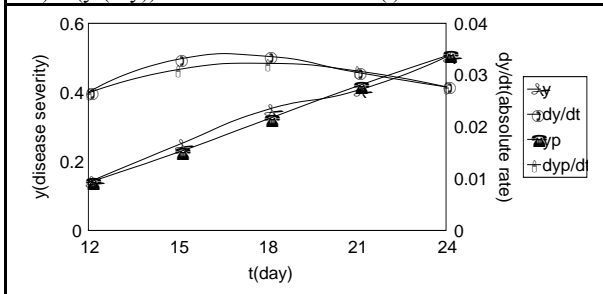
Gompertz=G • Weibull c=2=W2 • Weibull c=3=W3



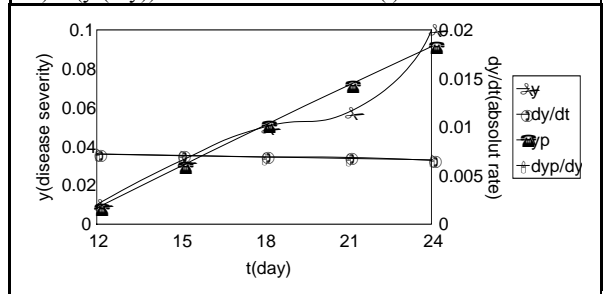
a) $\ln(y/(1-y)) = -10.8552 + 3.65684 \ln(t)$ $R^2 = 0.787$



b) $\ln(y/(1-y)) = -8.23126 + 2.65564 \ln(t)$ $R^2 = 0.804$



c) $\ln(y/(1-y)) = -8.43546 + 2.6611 \ln(t)$ $R^2 = 0.678$



d) $\ln(1/(1-y)) = -0.0731564 + 0.00789866 t$ $R^2 = 0.575$

() (c) (b) (a)

() (d)

(dyp/dt

dy/dt

yp

y

)

B

RMSE

B

CD

RMSE ME

CRM

CD

$R^2 = /$

CRM

b

EF

R^2

ME

$R^2 = /$

CD

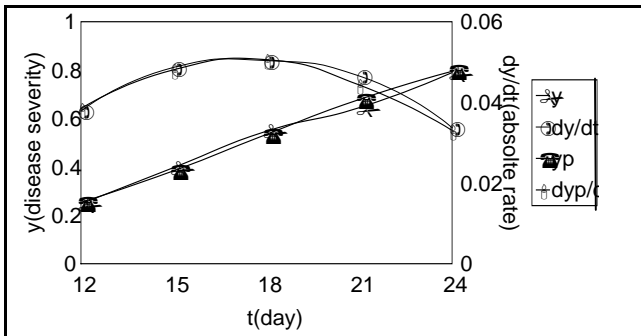
$R^2 = /$

d

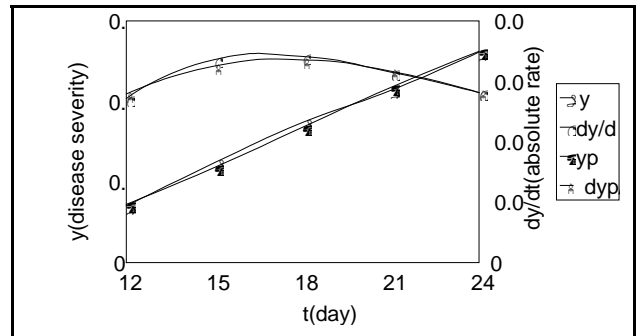
c

a

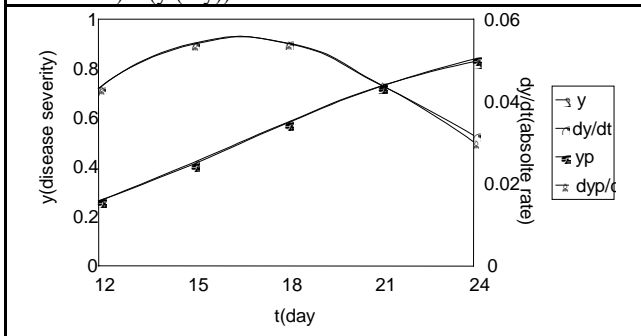
ME R^2



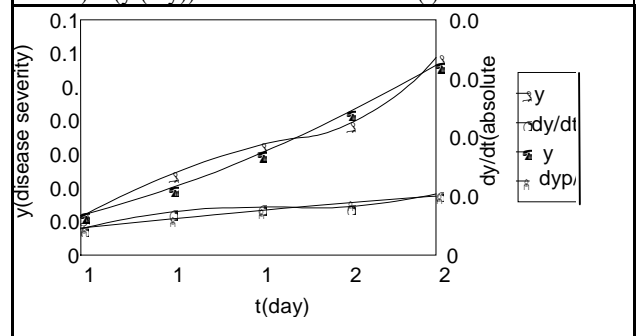
a) $\ln(y/(1-y)) = -3.52131 + 0.203323 t$ $R^2 = 0.859$



b) $\ln(y/(1-y)) = -8.50394 + 2.70653 \ln(t)$ $R^2 = 0.839$



c) $\ln(y/(1-y)) = -3.69396 + 0.222399 t$ $R^2 = 0.907$



d) $\ln(y/(1-y)) = -9.69125 + 2.40069 \ln(t)$ $R^2 = 0.788$

(d) (b) (c) (a)

(dyp/dt dy/dt

yp y

()

()

ME

()

R^2

(Jeger)

()

RMSE ME R^2

()

(B)							(A)						R ²
A							B						
	R ²	ME	RMSE	CD	EF	CRM	R ²	ME	RMSE	CD	EF	CRM	
M	/	/	/	/	/	/	/	/	/	/	/	/	
L	/	/	/	/	/	/	/	/	/	/	/	/	
LL	/	/	/	/	/	/	/	/	/	/	/	/	
G	/	/	/	/	/	/	/	/	/	/	/	/	
W2	/	/	/	/	/	/	/	/	/	/	/	/	
W3	/	/	/	/	/	/	/	/	/	/	/	/	

Monomolecular=M Logistic=L Log-logistic=LL Gompertz=G Weibull c=2=W2 Weibull c=3=W3

R²

ME (/) R²

R² = /

()

Mse R²

Mse

R²

()

R^2

R^2 ()

R^2

R^2

-
1. Performance
 2. Appropriateness

REFERENCES

Fusarium

7. Agrios, G. N. 1997. *Plant Pathology*. 4th.Ed. Academic Press. 635pp.
8. Bai, G. H., & G. Shaner. 1994. Scab of wheat: prospects for control. *Plant Disease* 78: 760-766.
9. Berger, R. D. 1981. Comparison of the Gompertz and logistic equation to describe plant disease progress. *Phytopathology* 71:716-719.
10. Campbell, C. L. 1986. Interpretation and uses of disease progress curves for root diseases. In: *Plant Diseases Epidemiology*. Vol. 1: Population Dynamics and Management. edited by Leonard, K. J. and Fry, W. E. Macmillan Publishing Company. New York. pp. 38-54.
11. Campbell C. L., & L. V. Madden. 1990. *Introduction to Plant Disease Epidemiology*. John Wiley and Sons. 532 pp.
12. Clear, R. M., & S. K. Patrick. 2000. Fusarium head blight pathogens isolated from fusarium-damaged kernels of wheat in western Canada, 1993 to 1998. *Canadian Journal of Plant Pathology* 22: 51-60.
13. Dewolf, E. D., L. Madden, & P. Lipps. 2003. Risk assessment models for wheat Fusarium head blight epidemics based on within- season weather data. *Phytopathology* 93:428- 435.
14. Diaz De Ackreman, M., & M. M. Kohli. 1997. Reaserch on Fusarium head blight of wheat in Uruguay. In: *Fusarium head scab: global status and future prospects*. Edited by Dubin, H. J., Gilcrist, L., Revees, J., and McNab, A. Mexico, D. F. CIMMYT. PP 15-18.

15. Francle, L., S. Markell, S. Ali & T. L. Frisen. 2000. *Gibberella zeae* population dynamics: A progress report. Pages, 144-146 in: Proc. 2000 National Fusarium Head Blight Forum.
16. Fried, P. M., D. R. Mackenzi, & R. R. Nelson. 1979. Disease progress curves of *Erysiphe graminis* f.sp *tritici* on chancellor wheat and for multilines. *Phytopathology Z*, 95: 151-166.
17. Gilbert, J., & A. Tekauz. 2000. Recent development in research on FHB of wheat in Canada. *Canadian Journal of Plant Pathology* 22: 1-8.
18. Gottwald, T. R. 1995. Spatio-temporal analysis and isopath dynamics of citrus scab in nursery plots. *Phytopathology* 85: 1082-1092.
19. Gottwald, T. R., L. W. Timmer, & R. G. Mc Guir. 1989. Analysis of disease progress of citrus canker in nurseries in Argentina. *Phytopathology* 79: 1276-1283.
20. Habili, N. & F. W. Jr. Nutter. 1997. Temporal and spatial analysis of grapevine leafroll-associated virus 3 in pinot Noir grapevines in Australia. *Plant Disease* 81: 625-628.
21. Homae, M., C. Direcon, & R. A. Feddes. 2002. Simulation of root water uptake 1-Non-uniform transient salinity using different macroscopic reduction functions. *Agricultural Water Management*, 57: 89-109.
22. Lipps, P. 1996. Head blight or scab of small grains. Extension Fact Sheet, Ohio State University. [www. ag. ohio-sted. edu/~ ohioline](http://www.ag.ohio-sted.edu/~ohioline).
23. Martinelli, J., G. Bocches, L. Gale., W. Xie, K. O'Doneall, & H. C. Kistler. 2001. Soybean is a host for *Fusarium graminearum*. Page 136 in: Proc. 2001 National Fusarium Head Blight Forum.
24. Parry, D. W., P. Jenkinson & L. McLeod. 1995. Fusarium ear blight (scab) in small grain cereals- a review. *Plant Pathology* 44: 207- 238.
25. Prom, L. K., R. D. Horsley, B. J. Steffenson & P. B. Schwarz. 1999. Development of fusarium head blight and accumulation of deoxynivalenol in barley sampled at different growth stages. *Journal of the American Society of Brewing Chemists* 57: 60- 63.
26. Shah, D. A., C. A. Stockwell, S. O. Kawamoto & G. C. Bergstrom. 2000. Spatial patterns of Fusarium head blight in New York wheat fields during the epidemic of 2000. Pages 174- 175 in: Proc. 2000 National Fusarium Head Blight Forum.
27. Waggoner, P. E. & D. E. Aylor. 2000. Epidemiology: a science of patterns. *Annual Review of Phytopathology* 38: 71-94.