

( )

\*

( // : // : )

/ / /

/

:

( )

( )

( )

( )

%

( ) %

Saturn

( )

( )

( )

( )

( )

( )

( )

( )

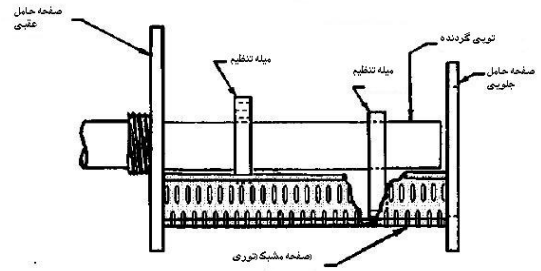
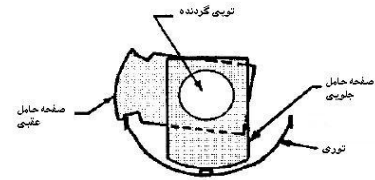
( )

%

/ /

( )

( )



( )

( )

(McGILL MILLER)

( )

( )

( ) ( )

GMK-

( ) 303RS

:( )

$$ind_w = (1 - y) \left( \frac{S_w}{S_w + S_{br} + S_i} \right)$$

=ind<sub>w</sub>

=y

=S<sub>w</sub>

=S<sub>br</sub>

=S<sub>i</sub>

EXCEL

MSTATC

$$S_w = \frac{(M_b - M_w) \times 100}{M_b}$$

(gr)

=M<sub>b</sub>

(gr)

=M<sub>w</sub>

$$S_{br} = \frac{M_{br} \times 100}{M_w}$$

( )

=M<sub>br</sub>

(gr)

$$y = \frac{E_2}{E_1}$$

( )

=E<sub>1</sub>

=E<sub>2</sub>

( )

S<sub>i</sub> y

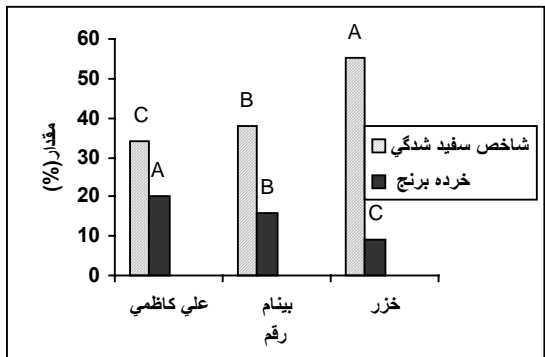
- 
1. Whitening Index
  2. Degree of Polish

( )

( )

( )

( )



( )

/ /

( )

( )

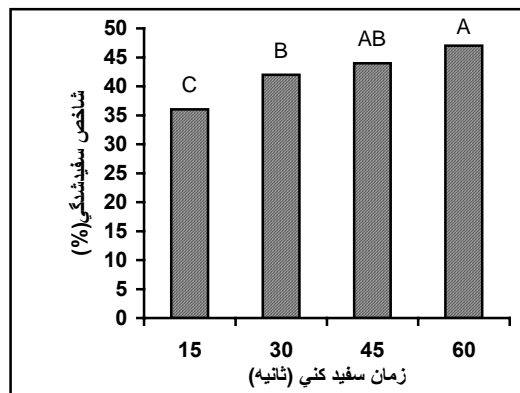
( )

( )

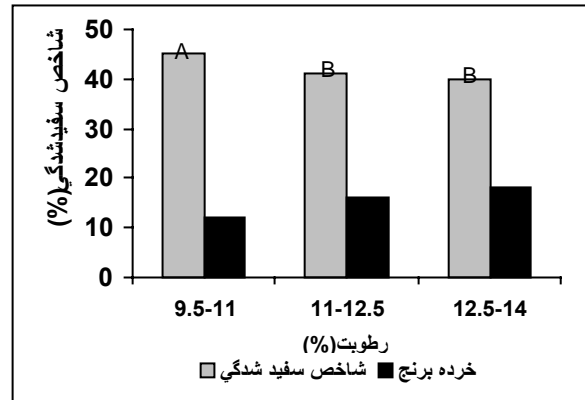
/	ns	/	**	
/		/		
/	**	/	**	
/	ns	/	ns	x
/		/		
/	**	/	**	
/	ns	/	ns	x
/	**	/	**	x
/	ns	/	ns	x x
/		/		

\*\* \*

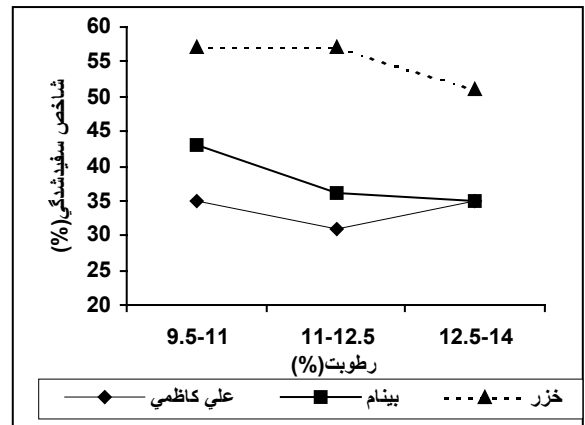
=ns



( )

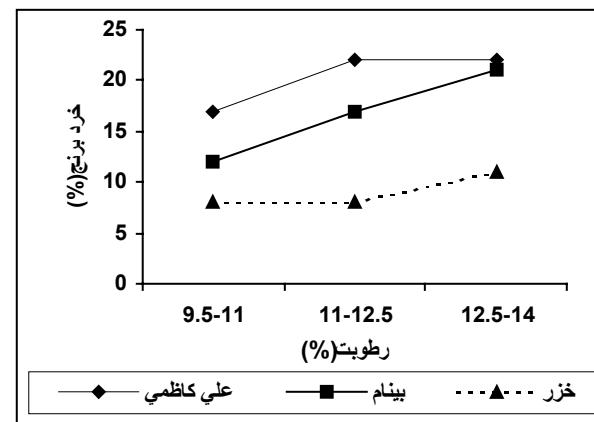


( ) (%)



( ) ( )

( ) (%)



( ) (%)

## REFERENCES

- ( )
9. Bautista, R. C. & T. J. Sibenmorgen. 2000 . Fissure formation in brown rice kernels observed with a video microscopy system ongoing stuies. Rice Quality and Processing. B. R. Wells. Rice Research Series.
  10. Chakraverty, A. 1988. Post harvest technology of cereals, pulses and oilseeds. Indian Institute of Technology, Kharagpur, Oxford and IBH Publishing Co. PVT. LTD, New Dehli.
  11. Khan, M.K. & S.N. Mohanty. 1991. Effects of different clearances between two rubber rolls on dehusking of paddy. Agriculture Mechanization in Asia, Africa and Latin America, 22(4):51-53.
  12. Lee-By, J. R. Son, Y. B. Kim, I. H. Yoon, and P. J. Ham.1989. Studies on the Milling Properties to moisture content of rice. Agricultural Sciences Institute, Rural Development Administration, Suwean, Korea Republic. 31(4):1-4.
  13. Mathews, J. & J. J. Spadro. 1976. Breakage of long-grain rice relation to kernel thickness. Cereal Chem., 53:13-19. In: Rice: Production and Utilization. ed. Bor S. Luh, AVI Publishing Co, INC.
  14. Nishiyama, Y. 1995. Rice Post Harvest Technology: Food Agency, 333-346 Tokyo: ACE Corporation.
  15. Pandey, J. P. & P. C. Sah. 1993. Rice kernel breakage kinetics in the process operation for bran removal. Journal food Science Technology, 30(5):365-367.
  16. Smith, W.D. & W. Mccrea. 1951. Where breakage occurs in the milling of rice. Rice Journal. 54(2):14-15. In: Rice: Production and Utilization.ed. Bor S. Luh, AVI Publishing Co,INC.
  17. Stipe, D.R., F.T. Wratten, & M.F. Miller. 1972. Effects of various methods of handling brown rice on milling and other quality parameters. Process. 14th Rice Technology.Working Group,June 20-22, Davis, California. In:Rice: Production and Utilization. ed. Bor S. Luh, AVI Publishing Co,INC.

